

## Clamp nuts

Malleable Cast Iron / Stainless Steel

### SPECIFICATION

#### Version in malleable cast iron

- Fettleed
- Contact face machined

#### Version in Stainless Steel precision casting AISI CF-8 NI

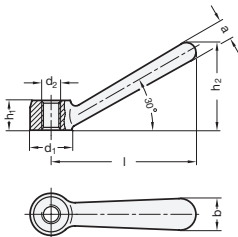
- Fettleed
- Contact face machined

### ON REQUEST

- Clamp nuts GN 206 (see page 405), powder coated

### TECHNICAL INFORMATION

- Stainless Steel Characteristics (see page A26)



## Clamp nuts with double lever

Malleable Cast Iron / Stainless Steel

### SPECIFICATION

#### Version in malleable cast iron

- Fettleed
- Contact faces machined

#### Version in Stainless steel precision casting NI

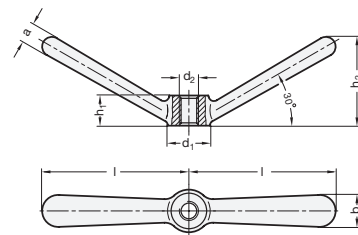
- AISI CF-8
- Fettleed
- Contact faces machined

### ON REQUEST

- Clamp nuts with double lever GN 206.1 (see page 405), powder coated

### TECHNICAL INFORMATION

- Stainless Steel Characteristics (see page A26)



### GN 206

Description	d1	d2	a	b	h1	h2 ≈	l ≈	Δ
GN 206-16-M8	16	M 8	7	12	12	35	56	34
GN 206-20-M10	20	M 10	9	14	14	44	70	63
GN 206-25-M12	25	M 12	11	18	18	52	87	125
GN 206-32-M16	32	M 16	15	22	22	66	109	248
GN 206-40-M20	40	M 20	18	28	28	84	140	518

### GN 206.1

Description	d1	d2	a	b	h1	h2 ≈	l ≈	Δ
GN 206.1-16-M8	16	M 8	7	12	12	36	56	61
GN 206.1-20-M10	20	M 10	9	14	14	44.5	70	104
GN 206.1-25-M12	25	M 12	11	18	18	55	87	200
GN 206.1-32-M16	32	M 16	15	22	22	68.5	109	400
GN 206.1-40-M20	40	M 20	18	28	28	87	140	780

### GN 206-NI

#### STAINLESS STEEL

Description	d1	d2	a	b	h1	h2 ≈	l ≈	Δ
GN 206-16-M8-NI	16	M 8	7	12	12	35	56	30
GN 206-20-M10-NI	20	M 10	9	14	14	44	70	62
GN 206-25-M12-NI	25	M 12	11	18	18	52	87	125
GN 206-32-M16-NI	32	M 16	15	22	22	66	109	248
GN 206-40-M20-NI	40	M 20	18	28	28	84	140	491

### GN 206.1-NI

#### STAINLESS STEEL

Description	d1	d2	a	b	h1	h2 ≈	l ≈	Δ
GN 206.1-16-M8-NI	16	M 8	7	12	12	36	56	53
GN 206.1-20-M10-NI	20	M 10	9	14	14	44.5	70	98
GN 206.1-25-M12-NI	25	M 12	11	18	18	55	87	196
GN 206.1-32-M16-NI	32	M 16	15	22	22	68.5	109	396
GN 206.1-40-M20-NI	40	M 20	18	28	28	87	140	720